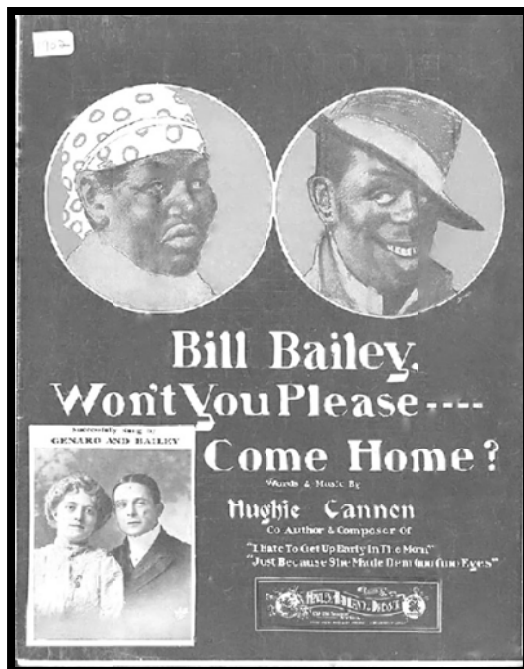


BILL BAILEY, WON'T YOU PLEASE COME HOME?

Hughie Cannon; 1904

This song was an instant hit when it was written in 1902 and today it is a 'standard' for most Dixieland and Traditional Jazz bands. A number of musical luminaries kept this tune alive over the last century. Among them are Louis Armstrong, Judy Garland, Ella Fitzgerald, and countless others

including Jim Sperry & myself on our CD, "*How Can We Keep From Singing?*" ☺



This song was originally written for Johnny Queen's musical, "*Town Topics*". Supposedly, it was based on a "real" Bill Bailey, a vaudeville performer who was often in trouble with his wife for staying out late with friends. Cannon, being one of those 'friends', helped him get a hotel room one night and wrote him this tune. The song was so popular it inspired a number of spin-off tunes including, "*I Wonder Why Bill Bailey Won't Come Home*" and "*Since Bill Bailey Came Back Home*".

Hughie Cannon, an American composer from Detroit (1877-1912) was a pianist for many vaudeville performers. He is also credited with having written the first traditional "blues" tune in 1904 when he wrote "*He Done Me Wrong*" ("Frankie and Johnny").

This arrangement is based on the original sheet music from 1902, which uses a number of "accidentals", both in the melody and in the underlying chord structure. Most of those can be found by capoing at the 4th fret, and making use of both the 6 and the 6+ frets.

~Tull